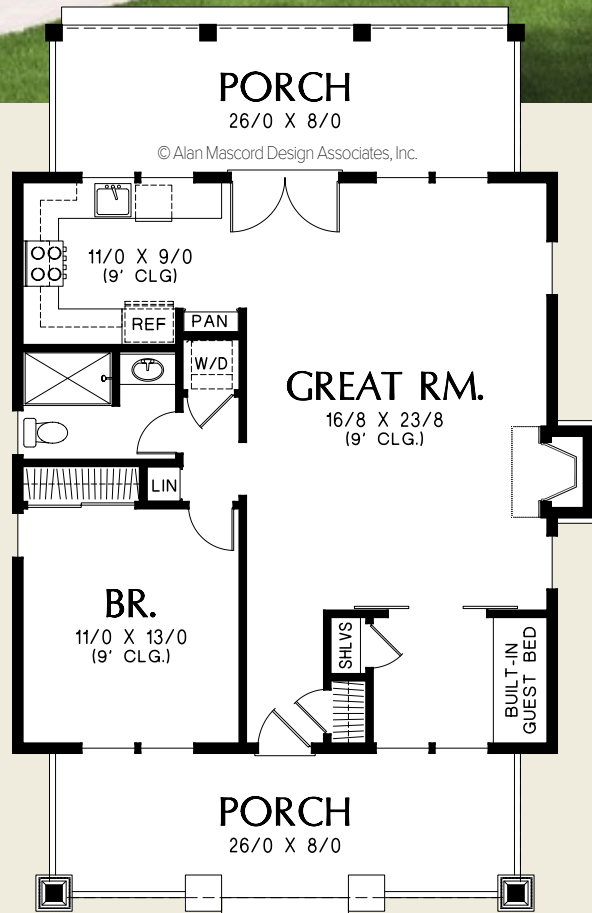




Mascord

ALAN MASCORD DESIGN ASSOCIATES, INC.

The Aumsville 1176



Total Area 960 Sq. Ft

Width 30'-0"
Depth 48'-0"

Height (Main Flr to Peak): 20'-6"
(to Midpt of Roof): 14'-6"



ALAN MASCORD DESIGN ASSOCIATES, INC
2187 NW Reed St, Suite 100, Portland, OR 97210 · 503.225.9161

mascord.com | houseplans.co